



Why Choose the OD Series?

The OD series of enclosures are the ultimate choice for your outdoor racking requirements. Being made of our own rugged Alumiflex®, you'll find it noticeably lighter than steel, yet strong enough to rack even the heaviest equipment. When choosing the OD series, you have handpicked the highest value in American construction. The OD-62DDXC includes the standard features you have come to expect with DDB, incorporating the versatile rail strut (R-Strut) system for adjustable racking, the security of a 3- point locking system and our patented Alumishield® solar cap to manage heat loads. For those who need more than just our standard enclosure, DDB can also make a truly customized solution with our many available options including HVAC, providing a climate-controlled environment for any electronic equipment, electrical load panels and cable entry solutions to name a few. All of this comes together to create an enclosure able to meet all of the unique needs your customers have been seeking. DDB offers a state-of-the-art design, a competitive price, benchmark lead times and a guaranteed delivery, all backed up with an industry leading 15-year warranty on every enclosure. Put DDB's substantial stock to work for you today. Contact our professional staff to assist you with your made-to-order solution.

Application Types

- Telecommunications
- Wireless/Broadband
 - Fiber Optics
 - Back Haul
- Small Cell/DAS
- Public Safety
- Utility
- Base Station
- Military
- Trailer-Based Communications
 - Wi-Fi
 - LTEE/4G/5G



Environmental & Safety Ratings:

- ✓ NEMA 3R, IP 24 (shown above)
- ✓ NEMA 4 and 4X, IP 66 configurable (not shown)
- ✓ OD-62 Series, ETL environmentally listed to UL 50/50E, Type 4's
Available here: <https://www.ddbunlimited.com/new-ul-50e-listed/>
- ✓ ETL listed; Safety Requirements, UL 62368-1:2019 Ed.3, CSA C22.2



Features

- 0.125" Aluminum Construction
- Stainless Steel External Hardware/Hinge
- 3 Point Lock System
- Heavy Duty Out-Door Construction
- Front and Rear Access
- Custom Colors Available
- Cream Powder-Coat in Stock
- Flexible and Scalable
- 15 Year Warranty
- Quick Shipping

Weight and Dimensions

- Approximate Exterior Enclosure Dimensions:
- 63"H x 28"W x 47"D
- Shipping Dimensions:
- 32"W x 52"L- Palletized
- Approximate Shipping Weight:
- 240 lbs.

OD Series

OD-62DDXC



Features

1. Alumishield
2. Front and Rear 19" Adjustable Racking Rails, 66 RU's
3. Rear Access Door
4. Stainless Steel Door Hinge
5. 3 Point Locking System
6. Powder-Coat Cream
7. Reusable Vent Filters



Installation, operating and
safety instructions can be
downloaded here



Scan this code for
replacement parts



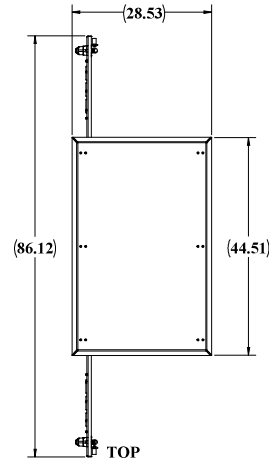
2301 S. HWY 77 Pauls Valley, OK 73075

T: (800) 753-8459 – F: (877) 220-7236

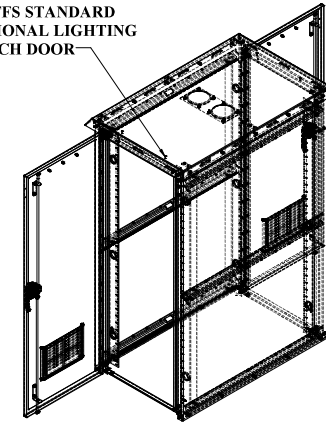
sales@ddbunlimited.com www.ddbunlimited.com

WEB DRAWING (NOT FOR FABRICATION)

REVISIONS		
REV.	DESCRIPTION	DATE
A	Web Drawing per DR-00425	11/15/2011
B	Add new components and DWG template to WEB DWG per DR-00925	5/12/2014
C	UPDATED TO 2019 FORMAT	3/4/2019
D	UPDATED FORMAT AND DRAWING TO SHOW NEW DOOR RODS.	4/15/2020

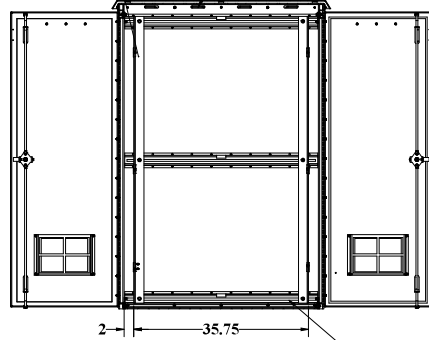


STANDOFFS STANDARD FOR OPTIONAL LIGHTING OVER EACH DOOR

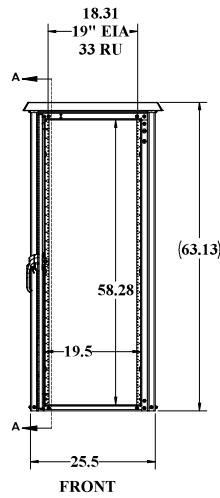


FRONT AND REAR RAIL STANDARD ON DDX

CEILING LOUVERS



R-STRUTS FOR RAIL ADJUSTMENTS

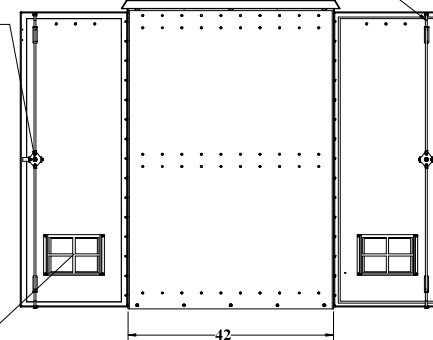


FRONT

DOOR RODS WITH ROLLERS

3 POINT LOCKING

FILTERED VENTS



RIGHT SIDE

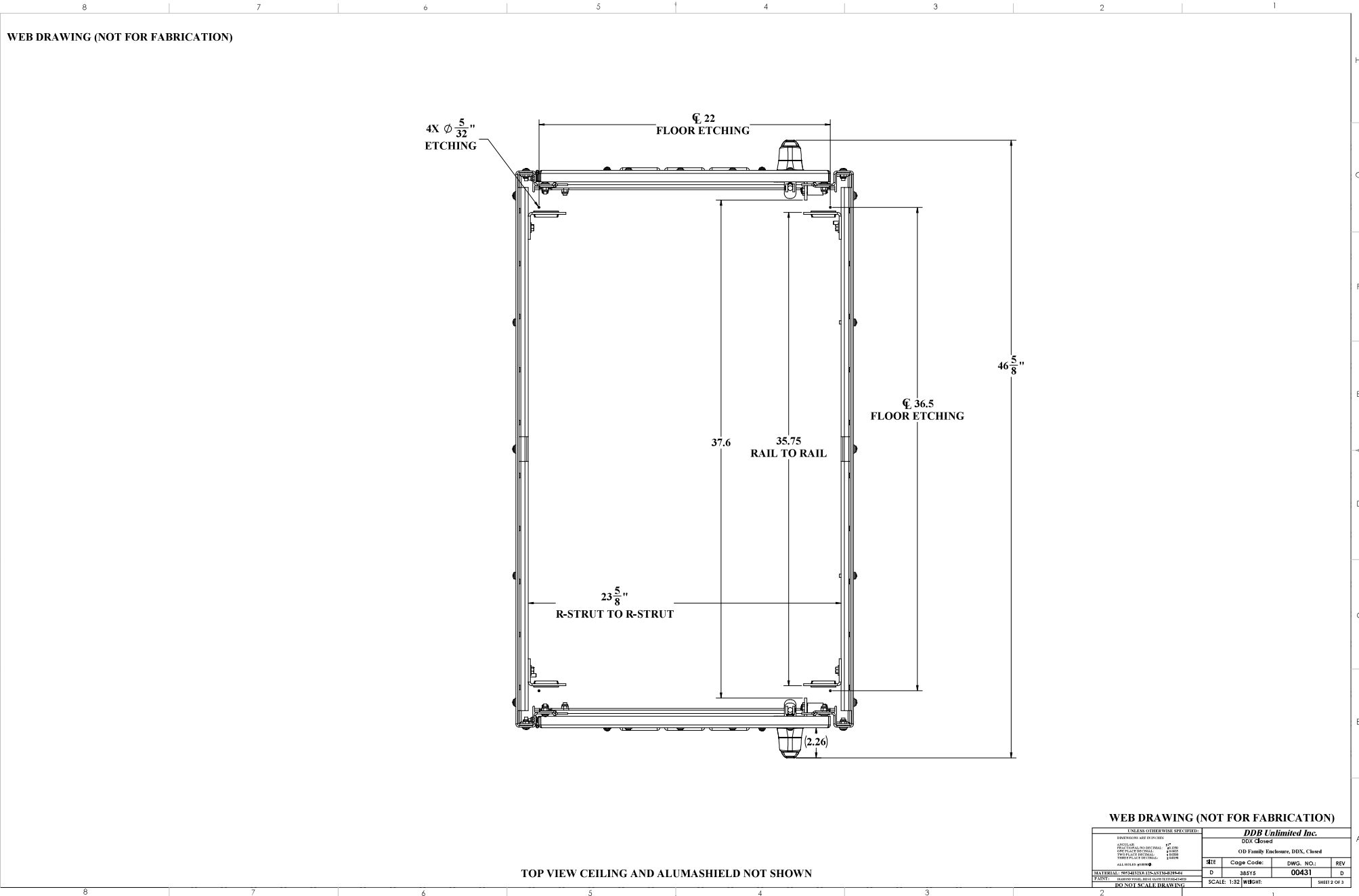
WEB DRAWING (NOT FOR FABRICATION)

UNLESS OTHERWISE SPECIFIED:		NAME	DATE	DDB Unlimited Inc.		
COMPONENTS AND FITTINGS	Model by:	0008	3/22/2004	DDB Family Endorses		
APPLICABLE	Drawn by:	Marcel	09/01/11	Endorsement: OJD 02 2008		
APPLICABLE	Checked by:	01/01/11				
APPLICABLE	Third Party Approval:	01/01/11				
APPLICABLE	SALES REP. BY:	01/01/11				
APPLICABLE	Q.A. APPR. BY:	04/21/20		SHEET	CAGE CODE:	DWG. NO.:
APPLICABLE	PROD. MGR. BY:	04/21/20		D	88515	00431
APPLICABLE	DATE:	04/21/20		D		D
MATERIALS: 80/20 ALUMINUM EXTRUSIONS			SCALE:	1:32	WEIGHT:	197 lbs.
FANZ: 80/20 ALUMINUM EXTRUSIONS			DO NOT SCALE DRAWING	SHEET 1 OF 3		

UNCLASSIFIED PUBLIC

File Location: (DDB) (PDM) (V04) C:\DDB\Drawing Request\Customer\GD8 WEB DWG\OD Family\WEB\DR-00431 (0D-62DD)

DDB FORM 7.1-2 REV. 05/02/19



WEB DRAWING (NOT FOR FABRICATION)

4X $\phi \frac{5}{32}$ "
ETCHING

ϕ 22
FLOOR ETCHING

$46 \frac{5}{8}$ "

ϕ 36.5
FLOOR ETCHING

37.6 35.75
RAIL TO RAIL

$23 \frac{5}{8}$ "
R-STRUT TO R-STRUT

(2.26)

TOP VIEW CEILING AND ALUMASHIELD NOT SHOWN

WEB DRAWING (NOT FOR FABRICATION)

UNLESS OTHERWISE SPECIFIED:			
DIMENSIONS ARE IN INCHES			
FINISH	UNTYPED	1"	
FINISH	UNRECESSED	1/16"	
FINISH	UNRECESSED	1/8"	
FINISH	UNRECESSED	1/4"	
FINISH	UNRECESSED	3/8"	
FINISH	UNRECESSED	1/2"	
FINISH	UNRECESSED	3/4"	
FINISH	UNRECESSED	1"	
ALL DIMENSIONS PER DWG			
MATERIAL	OPERATION	UNIT	REMARKS
D	28515	D	
DO NOT SCALE DRAWING			
SCALE: 1:32		WEIGHT:	SHEET 2 OF 3

DDP Unlimited Inc.

DDP Closed

DD Family Enclosure, DDP, Closed

REV: Cage Code: DWG. NO.: 00431 REV

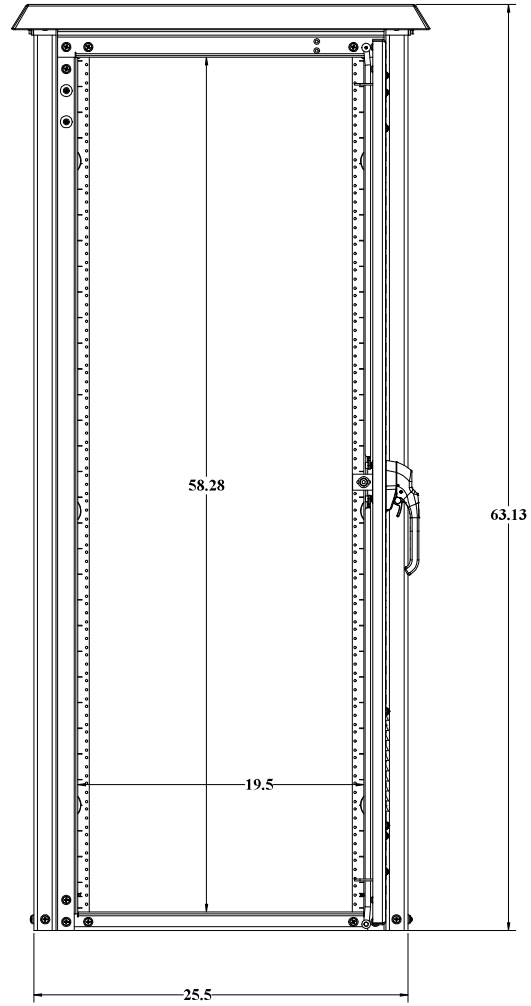
D 28515 D

UNCLASSIFIED PUBLIC
THE INFORMATION CONTAINED IN THIS DRAWING IS THE SOLE PROPERTY OF DDB Unlimited, INC. ANY REPRODUCTION IN PART OR AS A WHOLE WITHOUT THE WRITTEN PERMISSION OF DDB Unlimited, INC. IS PROHIBITED.

File Location: (DDP) (EPDM Vault)
C:\DDP\Drawing Requests\Customer\DDP WEB DWG\02 Family WEB\DR-00431 (00-62DDX)\

DDP FORM 7-1-2 REV 08/02/17

WEB DRAWING (NOT FOR FABRICATION)



BACK VIEW GASKET NOT SHOWN

WEB DRAWING (NOT FOR FABRICATION)

UNLESS OTHERWISE SPECIFIED:			
DIMENSIONS ARE IN INCHES			
FINISHES	AS SHOWN	1" = 1'-0"	
CONSTRUCTION	AS SHOWN	1/8" = 1'-0"	
PROFILES	AS SHOWN	1/8" = 1'-0"	
PAINT	AS SHOWN	1/8" = 1'-0"	
ALL DIMENSIONS ARE TO FACE UNLESS OTHERWISE SPECIFIED			
MATERIALS: UNLESS OTHERWISE SPECIFIED			
FINISH: UNLESS OTHERWISE SPECIFIED			
DO NOT SCALE DRAWING			
DDB Unlimited Inc.		GG-422DX	
Bachman, OD, SL, DEX			
REV	Code Code:	DWG. NO.:	REV
D	28515	00431	D
SCALE 1:32		WBHT:	SHEET 2 OF 3

UNCLASSIFIED PUBLIC
 THE INFORMATION CONTAINED IN THIS DRAWING IS THE SOLE PROPERTY OF DDB Unlimited, INC. ANY
 REPRODUCTION IN PART OR AS A WHOLE WITHOUT THE WRITTEN PERMISSION OF DDB Unlimited, INC. IS PROHIBITED.

File Location: (DDB)\EPDM Vault\
 C:\DDB\Drawing Requests\Customer\DOB WEB DWG\DO Form\ WEB\DR-00431 (OD-422DX)\

DDB FORM 7.1-2 REV A (08/02/17)