

2OD Series

2OD-30DDXC



Why Choose the 2OD Series?

When a single bay solution just isn't sufficient, the 2OD series enclosures are ideal. Constructed of our own rugged Alumiflex®, it is noticeably lighter than steel yet strong enough to rack the heaviest equipment. The 2OD-30DDXC includes a number of standard features, such as an adjustable racking system with a versatile rail strut system (R-Strut), a 3-point locking system for security, a reversible rack system for 19" and 23" applications, lifting hooks for easy maneuvering into place, wind locks to secure doors safely when they are open, and our patented Alumishield® solar cap for managing heat loads. Furthermore, DDB offers an array of customizable choices, which include climate control (HVAC), electrical load panels, and cable entry solutions. These possibilities combine to produce an enclosure that can be customized to meet the specific needs that your site and clients may require. The 2OD undoubtedly closes the gap between single-bay enclosures and larger building "hut" solutions, giving you the flexibility to meet any need in the field without the required stamps or inspections that traditional "huts" do. With an industry-leading 15-year warranty on every enclosure, DDB provides cutting-edge design, competitive pricing, benchmark lead times, and guaranteed delivery. Whether you require a custom enclosure or something from our substantial stock, our professional staff is here to help you today.

Application Types

- Telecommunications
- Wireless/Broadband
- Fiber Optics
- Back Haul
- Public Safety
- Utility
- Base Station
- Military
- Trailer-Based Communications
- Wi-Fi
- LTEE/4G/5G



Environmental & Safety Ratings:

- ✓ NEMA 3R (shown above)
- ✓ NEMA 4 and 4X configurable (not shown)



Features

- 15 Year Warranty
- 0.125" Aluminum Construction
- 3 Point Lock System
- Heavy Duty Out-Door Construction
- Front and Rear Access
- Standard Lifting Hooks
- Stainless Steel External Hardware/Hinge
- Cream Powder-Coat, Standard
- Quick Shipping

Weight and Dimensions

Approximate Exterior Enclosure Dimensions:

32"H x 65"W x 47"D

Shipping Dimensions:

54"L x 82"W x 40"H - Palletized

Approximate Shipping Weight:

377 lbs.

2301 S. HWY 77 Pauls Valley, OK 73075

T: (405)-665-2876

sales@ddbunlimited.com www.ddbunlimited.com

20D Series

20D-30DDXC



Features

1. Alumishield
2. 19" and 23" Adjustable Racking Rails
3. 3 Point Locking System
4. Stainless Steel Door Hinge
5. Powder-Coat Cream
6. Wind Locks
7. Reusable Filters
8. Rear Door Access
9. Heavy Duty 0.160" Doors

2301 S. HWY 77 Pauls Valley, OK 73075

T: (405)-665-2876

sales@ddbunlimited.com www.ddbunlimited.com

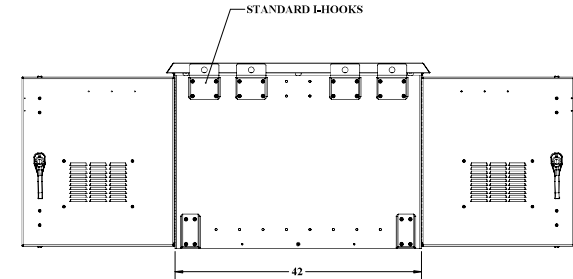
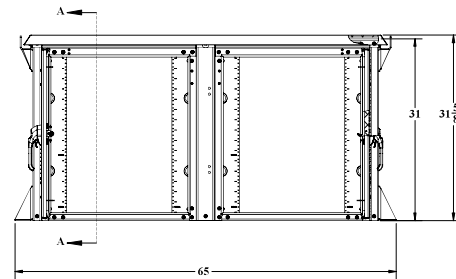
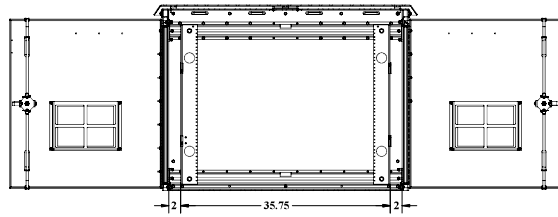
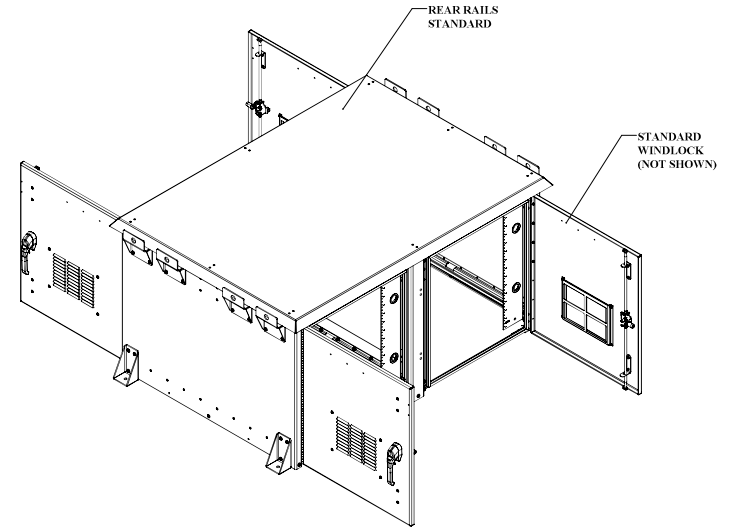
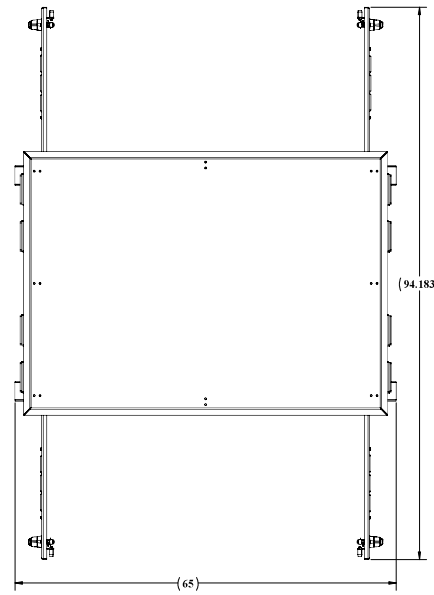
Scan this code for
Climate Control



Scan this code for
Accessories

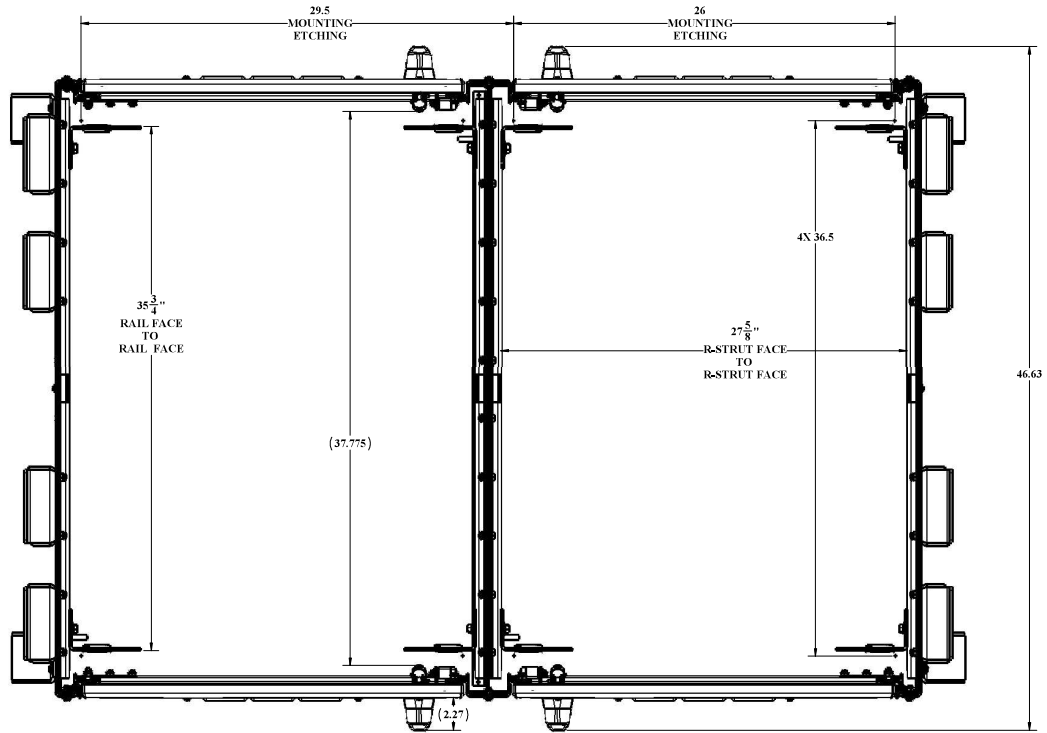


REVISIONS		
REV.	DESCRIPTION	DATE
A	Initial Release per DR-00962	5/28/2014
B	UPDATED SHEET FORMAT	11/18/2020



UNLESS OTHERWISE SPECIFIED:			
2018-300DX			
DESCRIPTION AND FINISH	FINISH		
EXTERIOR SURFACE	ALUMINUM		
INTERIOR SURFACE	ALUMINUM		
TRAY/SHELF SURFACE	ALUMINUM		
DRILL HOLE SURFACE	ALUMINUM		
ALL OTHER SURFACES	ALUMINUM		
MATERIAL SPECIFIED BY ALTA BIPROX			
PAINT: PRIMER/PAINT: BUNTDUSTED 17-200			
DO NOT SCALE DRAWING			
DDB Unlimited Inc.		DWG. NO. DR-00962	
REV	Code Code:	DWG. NO.:	REV
D	28515	00962	8
SCALE 1:8		WEIGHT 303 lbs.	SHEET 1 OF 3

UNCLASSIFIED PUBLIC



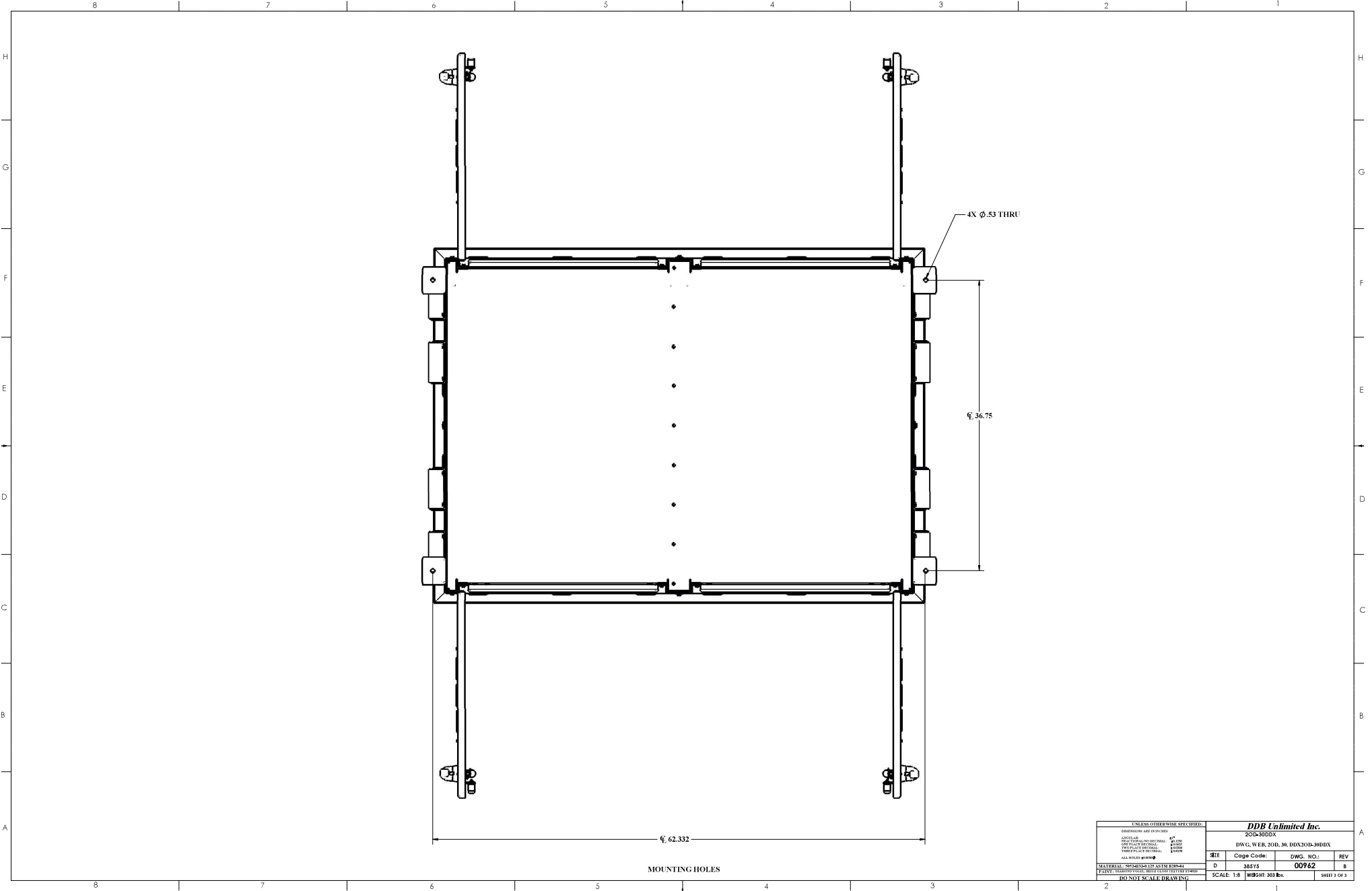
TOP VIEW SOLAR SHIELD AND CEILING NOT SHOWN

UNLESS OTHERWISE SPECIFIED:			
DIMENSIONS ARE IN INCHES	200-300DX-CLOSED		
WEIGHTS ARE APPROXIMATE	DWG. WEB 300_3M_DDX300-300DX-CLOSED		
FINISHES ARE AS SHOWN	REV	Code Code:	DWG. NO. REV
ALL DIMENSIONS ARE TO FACE UNLESS OTHERWISE NOTED	D	38515	00962 8
MATERIAL SPECIFIED BY ALTA BROWN	SCALE 1:8 WEIGHT 303 Lbs. SHEET 2 OF 3		
PAINTE: PRIMER/PAINT: RED OXIDIZED IRON P-240	DO NOT SCALE DRAWING		

UNCLASSIFIED PUBLIC

DDB FORM 7.1-2 REV A 08/02/17

DDB FORM 7.1-2 REV A 08/02/17



MOUNTING HOLES
UNCLASSIFIED PUBLIC

UNLESS OTHERWISE SPECIFIED:			
2018-2020X			
DESCRIPTION	UNIT		
QUANTITY	PER UNIT		
UNIT PRICE	PER UNIT		
TOTAL PRICE	PER UNIT		
ALL UNITS IN POUNDS			
MATERIAL SPECIFIED BY ALTA BROWN			
PAINT FINISHING AND QUALITY CONTROL			
DO NOT SCALE DRAWING			
DDB Unlimited Inc.			
DWG. NO. WEB. 300.36.DBX300.36.DBX			
REV	Code Code:	DWG. NO.:	REV
D	28515	00962	8
SCALE: 1:8		WEIGHT: 303 lbs.	SHEET 2 OF 3