

SOD Series-UL Listed

SOD-192420-UL50



Why Choose the SOD Series-UL Listed?

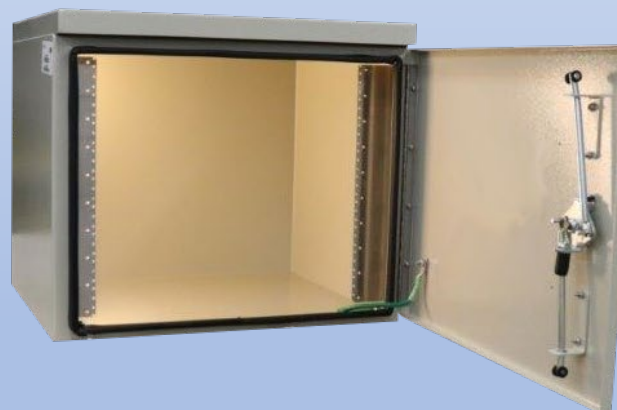
The SOD-192420-UL50 enclosure stands as a top choice for outdoor equipment racking, offering unparalleled versatility.

Constructed with our Alumiflex® material, it is notably lighter than steel yet strong enough to rack the heaviest equipment with ease. The SOD-UL50 series boasts effortless installation and provides pad, pole, and wall mounting options for endless placement possibilities. As shown in Type 4 configuration (w/o vents), the SOD-UL series is also available in a Type 3R configuration (with vents). With standard features like a 3-point lock system, built in solar cap to manage heat loads, door grounding straps, and UL-listed gasketing, the SOD-UL's value is unmatched. Adding to the flexibility, the SOD-UL series is configurable to be used for indoor and outdoor applications and has an extensive list of available options, including climate controls, electrical and cable entry solutions. All of this comes with the industry's best lead times, unmatched warranty and competitive pricing. As expected, the DDB SOD-UL50 series sets the mark as a design leader that is versatile and scalable to meet a wide array of situations. Contact our knowledgeable sales team for more information.



Application Types

- Telecommunications
- Wireless/Broadband
- Fiber Optics
- Back Haul
- Small Cell/ DAS
- Utility
- Base Station
- Military
- Trailer-Based Communications
- Wi-Fi
- LTEE/4G/5G



Environmental & Safety Ratings:

- ✓ UL Listed
- ✓ Type 4 shown (w/o vents)
- ✓ Type 3R available (with vents)

Features

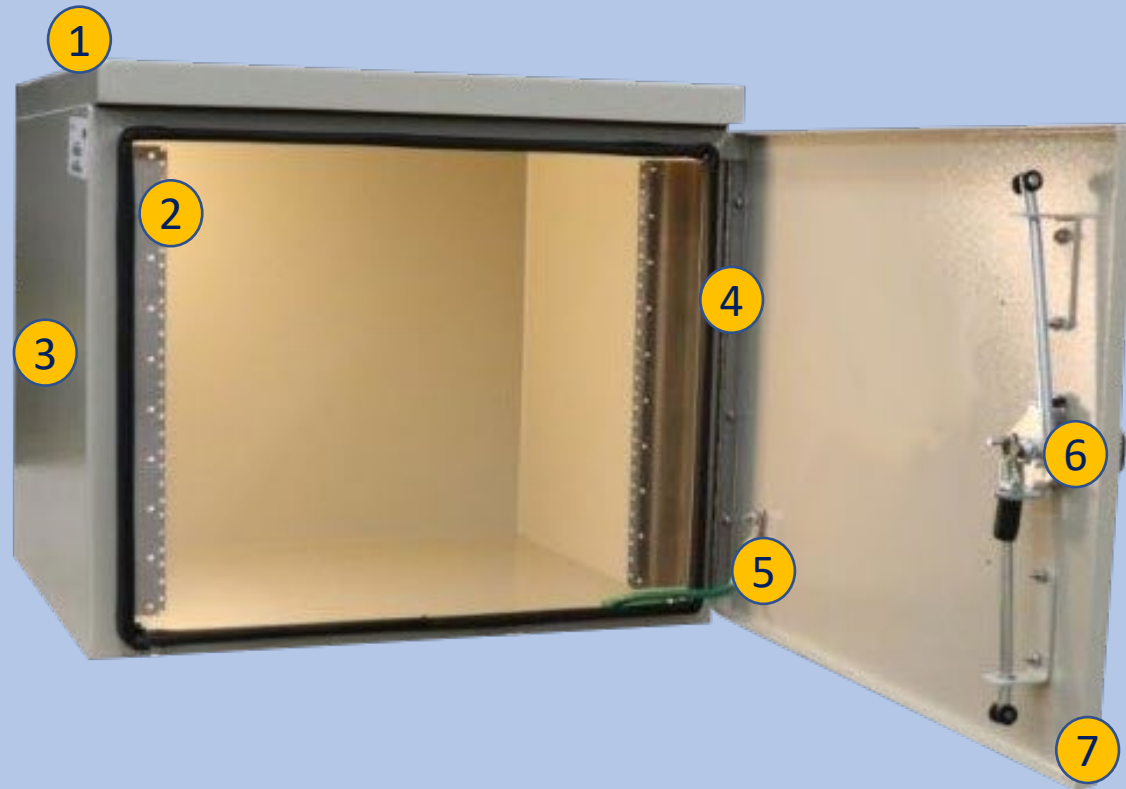
- 15 Year Warranty
- 0.125" Aluminum Construction
- 3-Point Lock System
- Heavy Duty Construction with Front Door Access
- Standard Lifting Hooks
- Stainless Steel External Hardware/Hinge
- Cream Powder- Coat, Standard
- Quick Shipping

Weight and Dimensions

- Approximate Exterior Enclosure Dimensions:
21"H x 24"W x 24"D
- Shipping Dimensions:
42"L x 32"W x 30"H- Palletized
- Approximate Shipping Weight:
85 lbs.

SOD Series-UL Listed

SOD-192420-UL50



Features

1. Solar Cap
2. 19" Racking Rails
3. Powder-Coat Cream
4. Stainless Steel Door Hinge
5. Door Grounding Straps
6. 3-Point Locking System
7. 0.125" Aluminum Construction

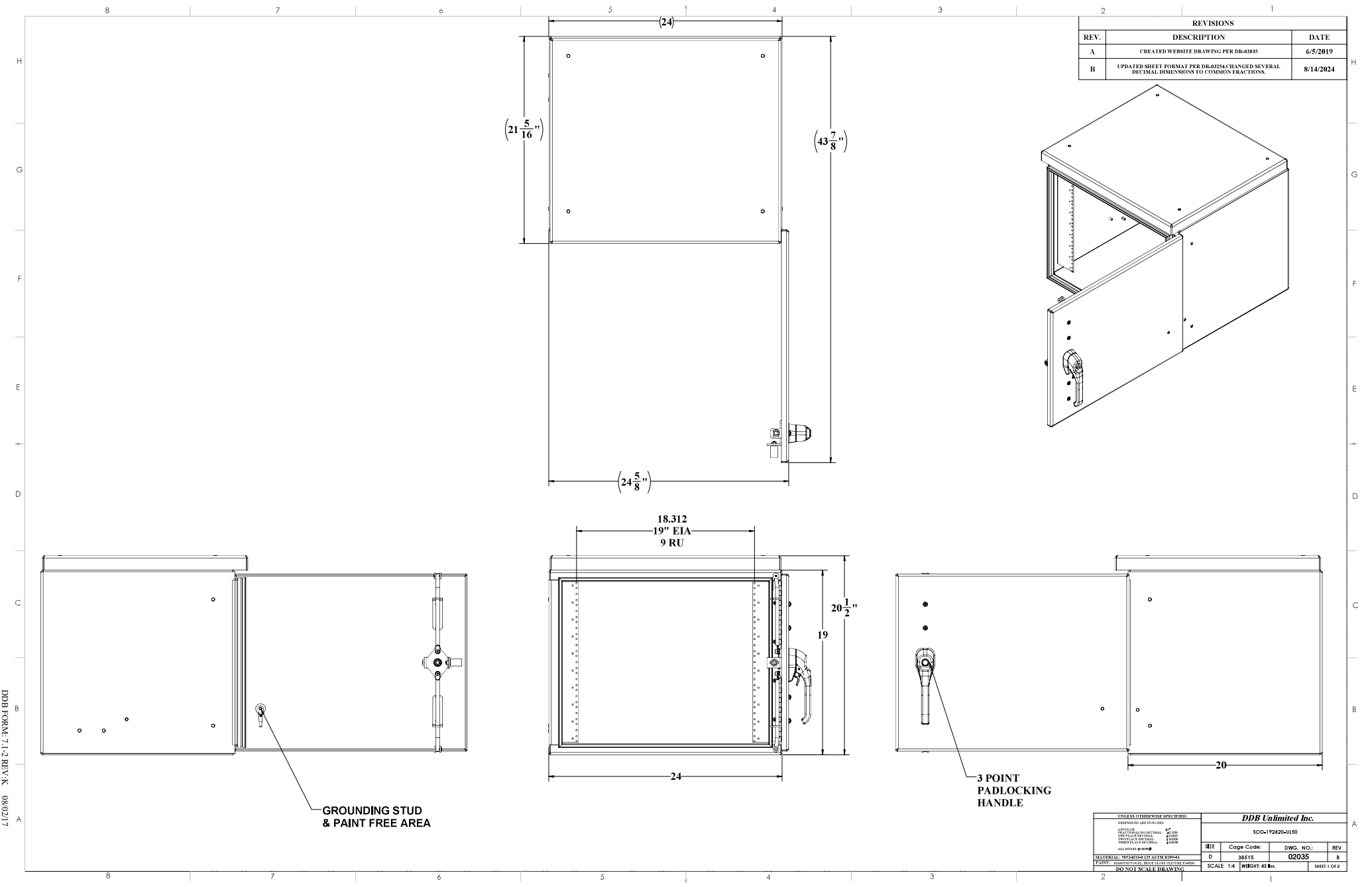
Scan this code for
Accessories



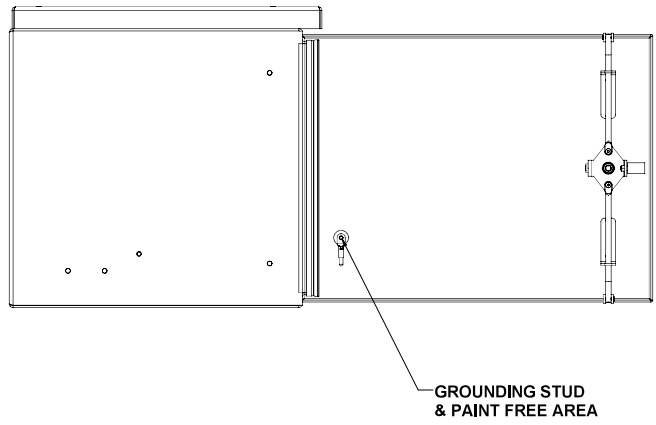
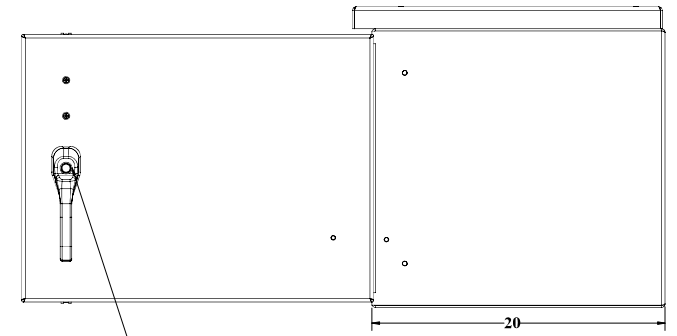
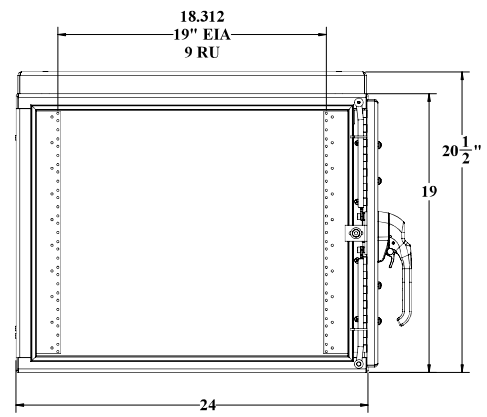
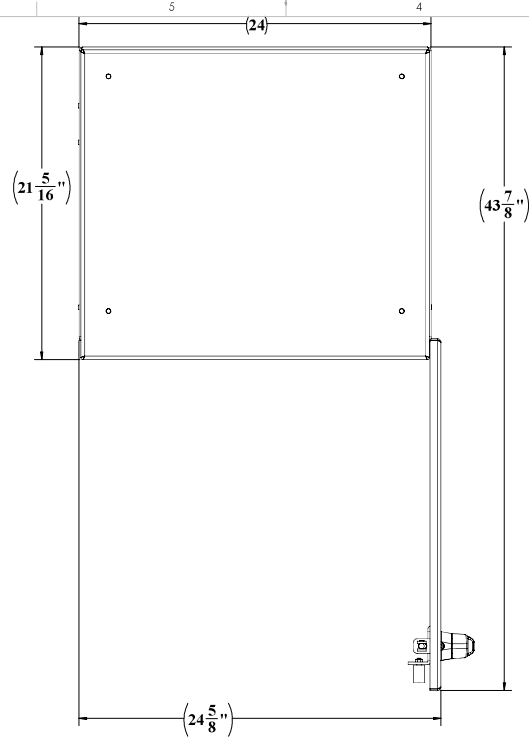
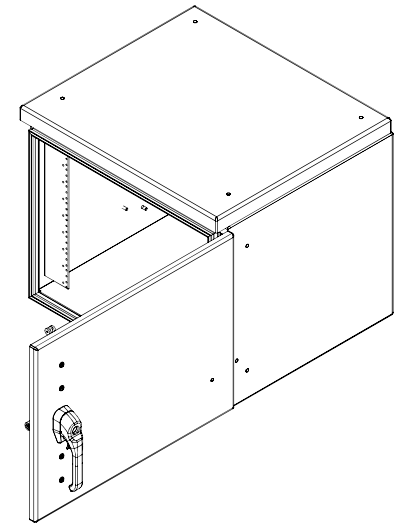
2301 S. HWY 77 Pauls Valley, OK 73075

T: (405)-665-2876

sales@ddbunlimited.com www.ddbunlimited.com



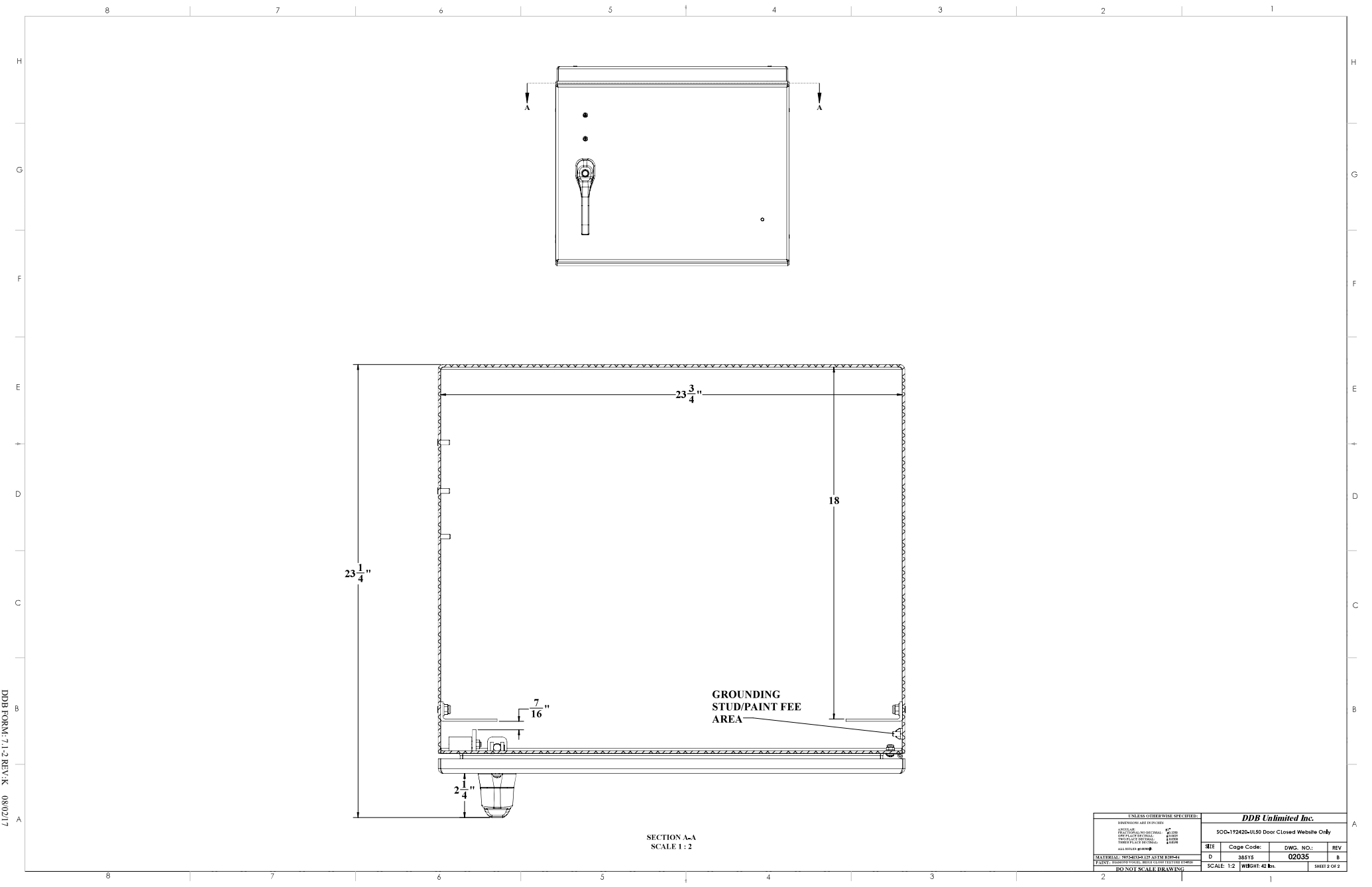
REVISIONS		
REV.	DESCRIPTION	DATE
A	CREATED WEBSITE DRAWING PER DR-0205	6/5/2019
B	UPDATED SHEET FORMAT PER DR-0254 CHANGED SEVERAL DECIMAL DIMENSIONS TO COMMON FRACTIONS.	8/14/2024



UNLESS OTHERWISE SPECIFIED:		DDB Unlimited Inc.	
DIMENSIONS ARE IN INCHES		SOD-192420-UI-50	
ASSEMBLY AND REPAIR	1/8"	SHEET	02035
CONSTRUCTION	1/16"	Code Code:	DWG. NO.:
TRAFFIC SIGNALS	1/16"	D	38515
OTHER PLACE MATERIAL	1/16"	SCALE: 1:4	WEIGHT 43 lbs.
ALL OTHERS	1/16"		SHEET 1 OF 2
MATERIAL SPECIFIED BY ALTA ENGINEER			
PAINT: STANDARD POLYESTER POWDER COATING (RAL 7035)			
DO NOT SCALE DRAWING			

UNCLASSIFIED PUBLIC

DDB FORM: 7.1.2 REV: K 08/02/17



SECTION A-A
SCALE 1:2

UNCLASSIFIED PUBLIC

UNLESS OTHERWISE SPECIFIED:			
DIMENSIONS ARE IN INCHES	1"	25.4	mm
ANGLE DIMENSIONS ARE IN DEGREES	90°	90	°
FINISHES ARE AS SHOWN			
ALL DIMENSIONS ARE TO FACE UNLESS NOTED OTHERWISE			
MATERIALS SPECIFIED BY ALTA BIRDAI			
PAINT FINISHES ARE TO BE AS SHOWN			
DO NOT SCALE DRAWING			

DDB Unlimited Inc.			
SOD-192420-0150 Door Closed Website Only			
REV	Code Code:	DWG. NO.:	REV
D	28515	02035	8
SCALE: 1:2		WEIGHT 42 lbs.	SHEET 2 OF 2

DDB FORM: 7.1.2 REV: A 08/02/17