

# UL-50 OD SERIES

## OD-50DDXC-UL50

## Why Choose the OD-UL Series?

The OD-50DDXC-UL50 enclosures are the ultimate choice for your outdoor racking requirements. Being made of our own rugged Alumiflex®, you'll find it noticeably lighter than steel, yet strong enough to rack even the heaviest equipment. When choosing the OD-UL series, you have handpicked the highest value in American construction. The OD-UL series includes the standard features you have come to expect with DDB, incorporating the versatile R-strut system for adjustable racking, the security of a 3- point locking system, our patented Alumishield® solar cap to manage heat loads, door grounding strap, & UL listed gasketing. For those who need more than just our standard enclosure, DDB can also make a truly customized solution with our many available options including HVAC, providing a climate-controlled environment for any electronic equipment, electrical load panels and cable entry solutions to name a few. All of this comes together to create an enclosure able to meet all of the unique needs your customers have been seeking. DDB offers a state-of-the-art design, a competitive price, benchmark lead times and a guaranteed delivery, all backed up with an industry leading 15-year warranty on every enclosure. Put DDB's substantial stock to work for you today. Contact our professional staff to assist you with your made-to-order solution.



## Features

- 15 Year Warranty
- 0.125" Aluminum Construction
- Welded Construction
- 3-Point Locking System
- Front and Rear Access
- Stainless Steel External Hardware/Hinge
- Custom Colors Available
- Water/Rain/Sleet/Dust Tight
- Flexible and Scalable
- Quick Shipping

## Application Types

- Telecommunications
- Wireless/Broadband
  - Fiber Optics
  - Back Haul
  - Base Station
- Small Cell/ DAS
- Utility
- Public Safety
- Military
- Trailer-Based
- Communications
- Wi-Fi
- Flexible and Scalable
- LTEE/4G/5G
- Intelligent Traffic



## Environmental & Safety Ratings:

- ✓ ETL environmentally listed to UL 50/50E, IP 66, Type 4
- ✓ ETL listed; Safety Requirements, UL 62368-1:2019 Ed.3, CSA C22.2

## Weight and Dimensions

- Approximate Exterior Enclosure Dimensions:  
51"H x 29"W x 47"D
- Shipping Dimensions:  
52"L x 32"W x 60"H- Palletized
- Approximate Shipping Weight:  
215 lbs.

# UL-50 OD SERIES

## OD-50DDXC-UL50



### Features

1. Alumishield Solar Cap
2. 19" Adjustable Racking Rails
3. Stainless Steel Door Hinge
4. 3-Point Locking System
5. 0.125" Aluminum Construction
6. Door Grounding Strap
7. Rear Door Access
8. Powder Coat Finish

2301 S. HWY 77 Pauls Valley, OK 73075

T: (405)-665-2876

[sales@ddbunlimited.com](mailto:sales@ddbunlimited.com) [www.ddbunlimited.com](http://www.ddbunlimited.com)

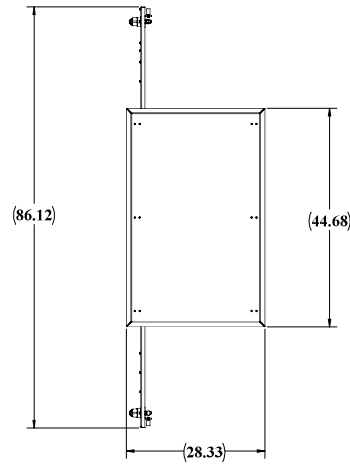
Scan this code for  
Climate Control



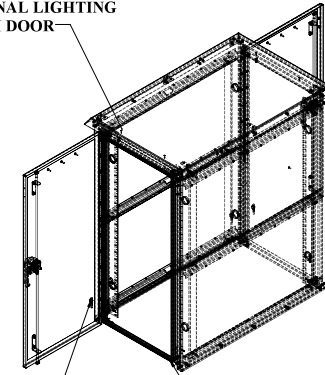
Scan this code for  
Accessories



| REVISIONS |  |           |
|-----------|--|-----------|
| REV.      | DESCRIPTION  | DATE      |
| A         | CREATED WEBSITE DRAWING FOR OD-50DDX-UL50 PER DR-01851 | 9/27/2018 |
| B         | UPDATED SHEET FORMAT                                   | 3/30/2022 |



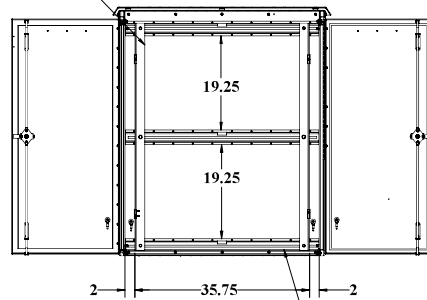
STANDOFFS STANDARD FOR OPTIONAL LIGHTING OVER EACH DOOR



4X GROUNDING STUDS

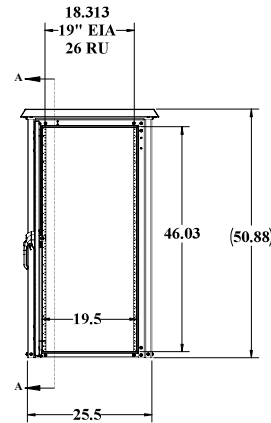
ALL SEAMS WELDED

FRONT AND REAR RAILS STANDARD

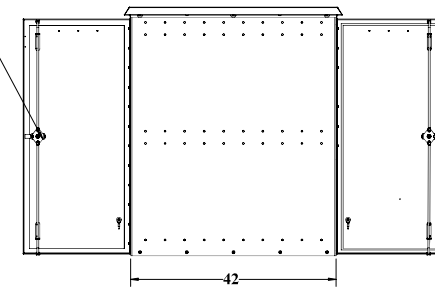


SECTION A-A

R-STRUT FOR RAIL ADJUSTMENTS



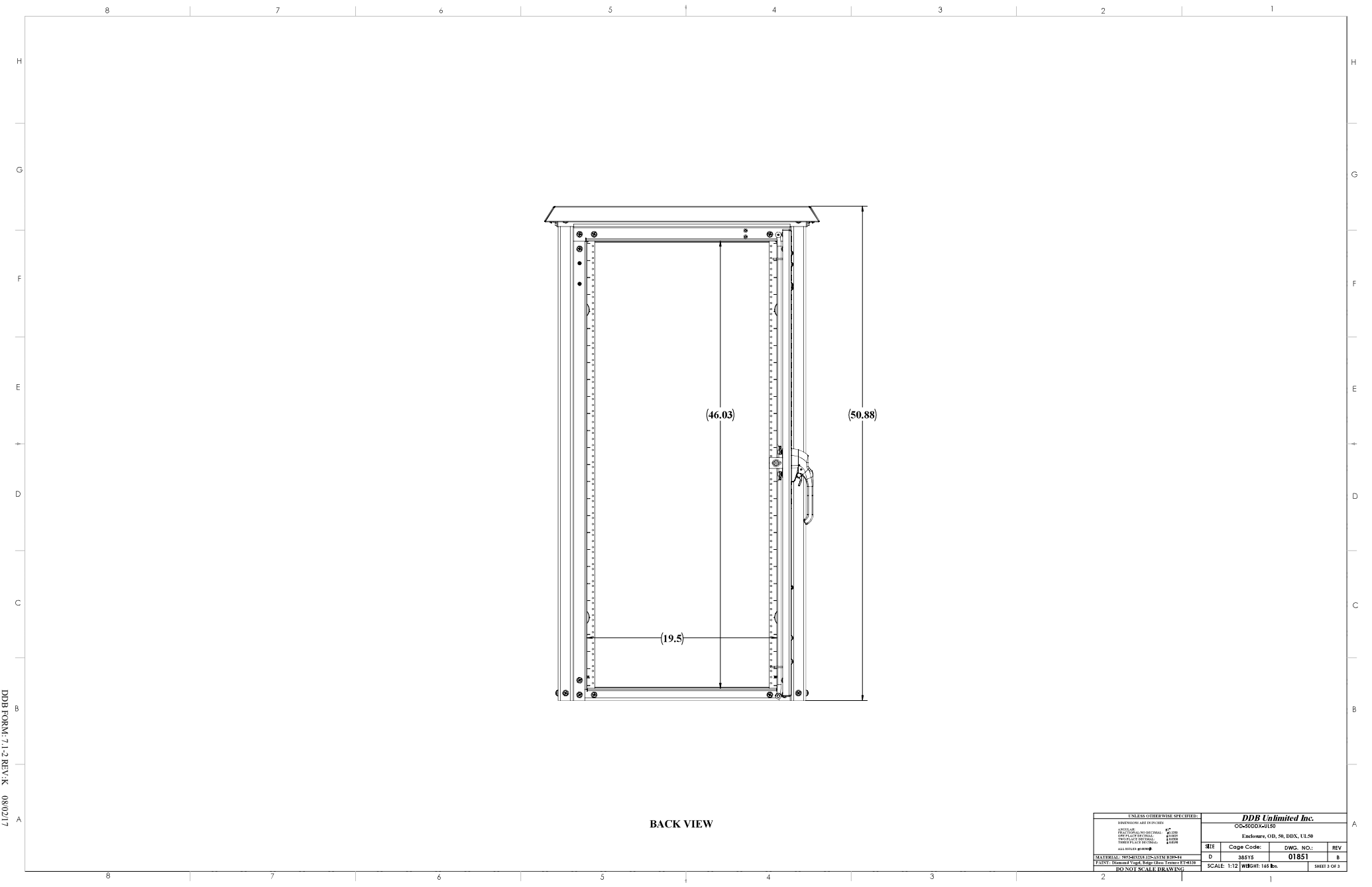
3 POINT LOCKING EACH DOOR



| UNLESS OTHERWISE SPECIFIED:        |               | DDB Unlimited Inc.                        |                  |              |
|------------------------------------|---------------|---|------------------|--------------|
| DIMENSIONS ARE IN INCHES           | OD-50DDX-UL50 | Fabricate: OD, 50, DIA, UL50IN-50DDX-UL50 |                  |              |
| ASSEMBLY AND SPECIAL               | 1" DIA        | REV                                       | Code Code:       | DWG. NO.:    |
| DRILLING AND SPECIAL               | 1/8" DIA      | D   | 28515            | 01851        |
| TRUCKING SPECIAL                   | 1/8" DIA      |   |                  |              |
| DRILL HOLE SPECIAL                 | 1/8" DIA      |   |                  |              |
| ALL DIMENSIONS                     |               |   |                  |              |
| MATERIAL: Standard - not specified |               | SCALE: 1:12                               | WEIGHT: 148 lbs. | SHEET 1 OF 3 |
| PAINT:                             |               | DDB NOT SCALE DRAWING                     |                  |              |

UNCLASSIFIED PUBLIC





BACK VIEW

UNCLASSIFIED PUBLIC

|                                   |   |             |                  |
|-----------------------------------|---|-------------|------------------|
| UNLESS OTHERWISE SPECIFIED:       |   |             |                  |
| DIMENSIONS ARE IN INCHES          |   |             |                  |
| FINISHES                          | AS SHOWN                                  | AS NOTED    | AS NOTED         |
| PROTECTIVE COATINGS               | AS SHOWN                                  | AS NOTED    | AS NOTED         |
| TRIM                              | AS SHOWN                                  | AS NOTED    | AS NOTED         |
| ALL DIMENSIONS                    | ±0.000                                    | ±0.000      | ±0.000           |
| MATERIALS: UNLESS OTHERWISE NOTED |   |             |                  |
| PAINT                             | Diamond Vinyl Edge Glass - Farnam FFC4330 | SCALE: 1:12 | WEIGHT: 148 lbs. |
| DO NOT SCALE DRAWING              |   |             |                  |

**DDB Unlimited Inc.**

OD-50DDX4LJ50

Indiana, OH, SR, DD, UL50

| REV | Code Code: | DWG. NO.: | REV |
|-----|------------|-----------|-----|
| D   | 28515      | 01851     | 8   |

SCALE: 1:12 | WEIGHT: 148 lbs. | SHEET 2 OF 3

DDB FORM: 7.1.2-REV.A 08/02/17