

UL-50 OD SERIES

OD-78DXC-UL50



Why Choose the OD-UL Series?

The OD-78DXC-UL50 enclosures are the ultimate choice for your outdoor racking requirements. Being made of our own rugged Alumiflex®, you'll find it noticeably lighter than steel, yet strong enough to rack even the heaviest equipment. When choosing the OD-UL series, you have handpicked the highest value in American construction. The OD-UL series includes the standard features you have come to expect with DDB, incorporating the versatile R-strut system for adjustable racking, the security of a 3-point locking system, our patented Alumishield® solar cap to manage heat loads, door grounding strap, & UL listed gasketing. For those who need more than just our standard enclosure, DDB can also make a truly customized solution with our many available options including HVAC, providing a climate-controlled environment for any electronic equipment, electrical load panels and cable entry solutions to name a few. All of this comes together to create an enclosure able to meet all of the unique needs your customers have been seeking. DDB offers a state-of-the-art design, a competitive price, benchmark lead times and a guaranteed delivery, all backed up with an industry leading 15-year warranty on every enclosure. Put DDB's substantial stock to work for you today. Contact our professional staff to assist you with your made-to-order solution.



Application Types

- Telecommunications
- Wireless/Broadband
 - Fiber Optics
 - Back Haul
 - Base Station
- Small Cell/ DAS
- Utility
- Public Safety
- Military
- Trailer-Based
- Communications
 - Wi-Fi
- Flexible and Scalable
 - LTEE/4G/5G
- Intelligent Traffic

Environmental & Safety Ratings:

- ✓ ETL environmentally listed to UL 50/50E, IP 66, Type 4
- ✓ ETL listed; Safety Requirements, UL 62368-1:2019 Ed.3, CSA C22.2



Features

- 15 Year Warranty
- 0.125" Aluminum Construction
- Welded Construction
- 3-Point Locking System
- Front and Rear Access
- Stainless Steel External Hardware/Hinge
- Custom Colors Available
- Water/Rain/Sleet/Dust Tight
- Flexible and Scalable
- Quick Shipping

Weight and Dimensions

Approximate Exterior Enclosure Dimensions:

79"H x 29"W x 30"D

Shipping Dimensions:

42"L x 32"W x 84"H- Palletized

Approximate Shipping Weight:

210 lbs.

UL-50 OD SERIES

OD-78DXC-UL50



Features

1. Alumishield Solar Cap
2. 19" Adjustable Racking Rails
3. Stainless Steel Door Hinge
4. 3-Point Locking System
5. 0.125" Aluminum Construction
6. Door Grounding Strap
7. Rear Door Access
8. Powder Coat Finish

2301 S. HWY 77 Pauls Valley, OK 73075
T: (405)-665-2876

sales@ddbunlimited.com www.ddbunlimited.com

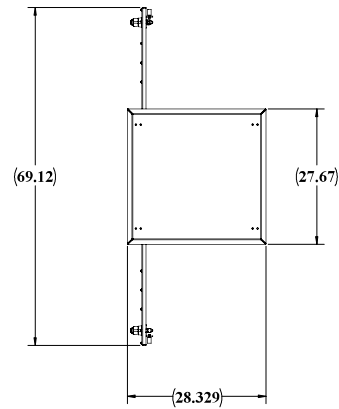
Scan this code for
Climate Control



Scan this code for
Accessories

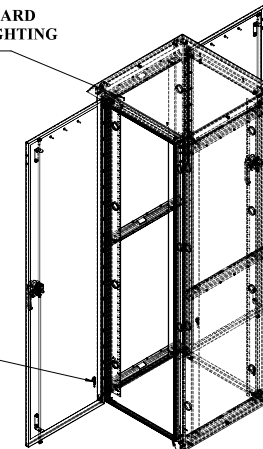


REVISIONS		
REV.	DESCRIPTION	DATE
A	CREATED WEBSITE DRAWING FOR OD-78DX-UL50 PER DR-01858	10/8/2018
B	UPDATED SHEET FORMAT	4/15/2022



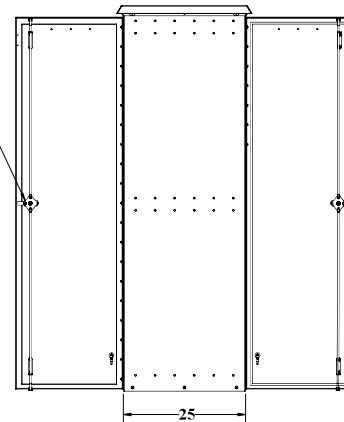
STANDOFFS STANDARD FOR OPTIONAL LIGHTING OVER EACH DOOR

4X GROUNDING STUDS



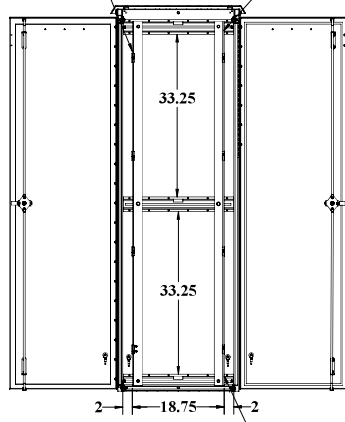
ALL SEAMS WELDED

3 POINT LOCKING EACH DOOR



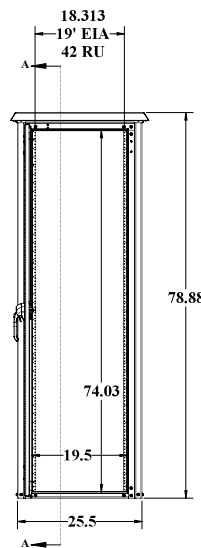
FRONT RAILS STANDARD

REAR RAIL OPTIONAL



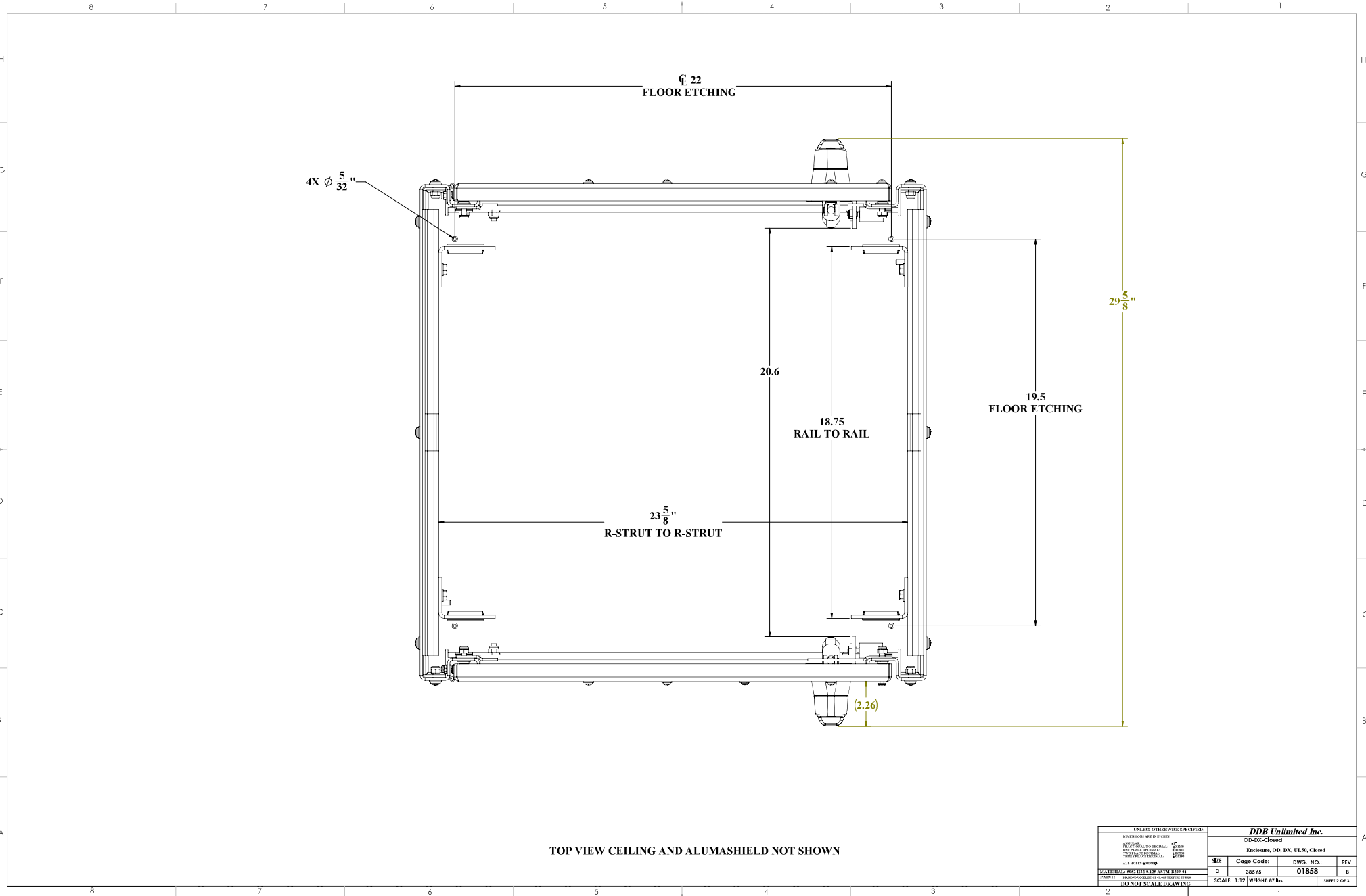
SECTION A-A

R-STRUT FOR RAIL ADJUSTMENTS



UNLESS OTHERWISE SPECIFIED:		DDB Unlimited Inc.			
DIMENSIONS ARE IN INCHES		OD-78DX-UL50			
FINISH	303	Envelope: 09_78_DX_UL50Dx78DXxL150			
DRILLING	AS SHOWN	REV	Code Code:	DWG. NO.:	REV
WELDING	AS SHOWN	D	28515	01858	8
MATERIAL:	304 SS	SCALE: 1:12		WEIGHT: 170 Lbs.	SHEET 1 OF 3
PAINT:		FINISH SCALE DRAWING			

UNCLASSIFIED PUBLIC

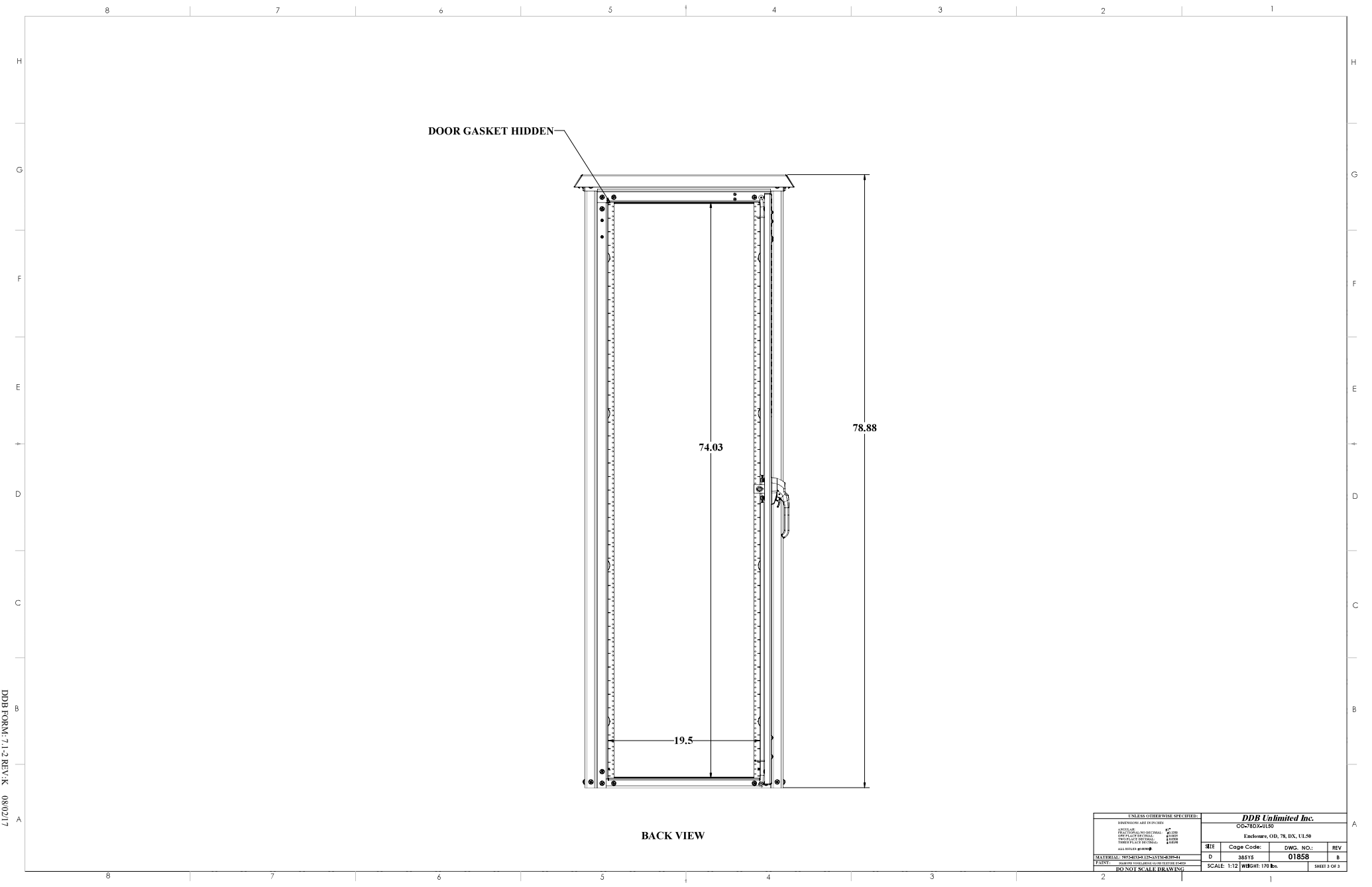


TOP VIEW CEILING AND ALUMASHIELD NOT SHOWN

UNLESS OTHERWISE SPECIFIED:			
DIMENSIONS ARE IN INCHES		DDB Unlimited Inc.	
ASSEMBLY	1"	C/D-074-0304	
CONSTRUCTION	1/8"	Inclement, OD, DX, HFSR, Closed	
FINISH	1/16"	REV	DATE
ALL DIMENSIONS	±.005	D	01858
MATERIALS	SEE SPECIFICATIONS	S	
PAINT	SEE SPECIFICATIONS	SCALE: 1:12 WEIGHT: 87 lbs. SHEET 2 OF 3	
DO NOT SCALE DRAWING			

UNCLASSIFIED PUBLIC

DDB FORM: 7.1.2 REV: AK 08/02/17



DOOR GASKET HIDDEN

74.03

78.88

19.5

BACK VIEW

UNCLASSIFIED PUBLIC

UNLESS OTHERWISE SPECIFIED:			
DIMENSIONS ARE IN INCHES			
FINISHES	AS SHOWN	FINISHES	AS SHOWN
PROTECTIVE COATINGS	AS SHOWN	PROTECTIVE COATINGS	AS SHOWN
TEMPERATURE	AS SHOWN	TEMPERATURE	AS SHOWN
WIND SPEED	AS SHOWN	WIND SPEED	AS SHOWN
ALL DIMENSIONS	UNLESS OTHERWISE SPECIFIED	ALL DIMENSIONS	UNLESS OTHERWISE SPECIFIED
MATERIALS	AS SHOWN	MATERIALS	AS SHOWN
PAINTS	AS SHOWN	PAINTS	AS SHOWN
DDB UNLIMITED INC.		DDB UNLIMITED INC.	
CD-780X4050		CD-780X4050	
Endframe, OD, TR, DL, LL, SR			
SHEET	Code Code:	DWG. NO.:	REV
D	28515	01858	8
SCALE: 1:12		WEIGHT: 170 lbs.	SHEET 2 OF 3

DDB FORM: 7.1.2 REV: K 08/02/17